

## BENEFITS

- *Financial, Project, and Distribution Analysis*

BIO provides analysis across financial, project, and distribution modules. The benefit – you and your employees are better equipped to get a 360 degree view of operations to manage your business and help make better decisions faster.

- *Empower More People*

BIO securely presents information to users across your organization. From CEO's, CFO's and department leaders, to accounting staff. The insight BIO provides helps empower them with a big picture of their data, showing trends and underlying causes rather than the minutiae of everyday processing. The benefit – users have insight to data pertaining to their roles allowing them to make decisions and help get answers to their questions in a timely manner.

- *55 Predefined Views of the Data*

BIO delivers not only analytic cubes, but 55 predefined views of the cube information as well. These views help people to be productive right away, and provide new ways to look at the data which may in turn provide new insights.

- *Managing Operations and Decision Making*

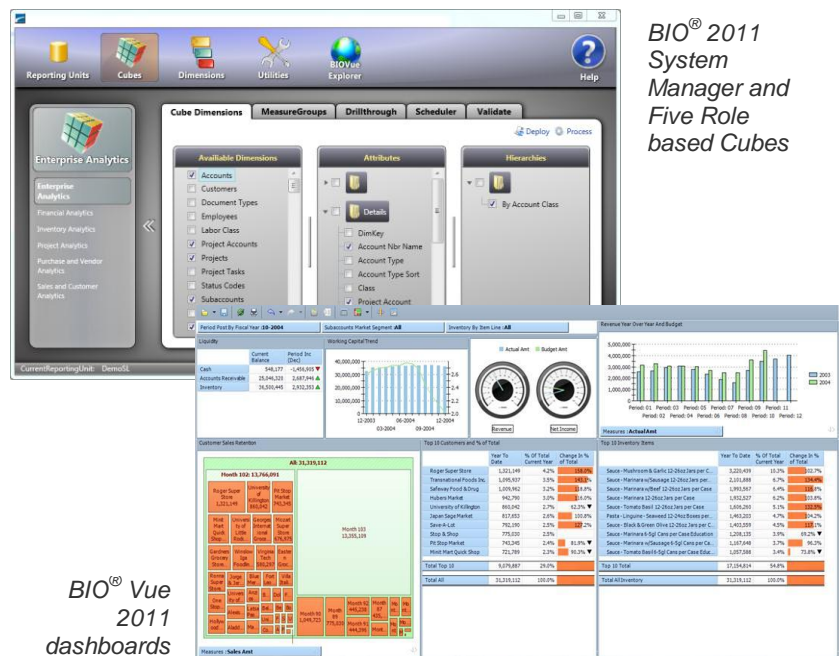
BIO enables you to manage progress in relation to KPIs and other measures and receive visual cues like traffic light alerts, charts, and gauges to enable quick decision making.

- *True Enterprise Analysis*

BIO lets you define an Enterprise data source that enables cross module reporting and analysis. Show project, inventory, customer and vendor data side by side. You decide what is important. The benefit – From cross module reconciliations to controlling billing leakage or providing an enterprise flash report. BIO provides a single source for a single truth.

## BIO<sup>®</sup> 2011 for Microsoft Dynamics<sup>®</sup> SL 2011

BIO<sup>®</sup> 2011 for Microsoft Dynamics<sup>®</sup> SL is a business intelligence and reporting solution. BIO leverages your Microsoft Dynamics SL data to provide valuable insight that drives knowledge based action and provides decision support. BIO goes beyond traditional reporting to provide self-service interactive reporting, analysis and dashboards. BIO delivers out-of-the-box value, allowing non-technical users to produce reports create ad hoc analyses or utilize over 50 high value pre-configured analyses.



BIO provides value-added content such as preprogrammed reports, preconfigured cubes, and over 400 predefined business objects like formulas and calculations, naming conventions, folders, and hierarchies. With BIO, you're looking at customer retention trends, vendor delivery performance, customer at-risk analyses, project performance, and product life cycles right out of the box. This means you can get started learning more about your business and help make more informed decisions the minute you are up and running.

BIO is built on the latest Microsoft technology and includes many new features, including dash boarding capabilities and performance enhancements. Use BIO for immediate, self-service access to timely data to achieve improved operational efficiency, better customer relationships, more effective sales and marketing, and increased profitability and accountability.

## BIO® 2011 for Microsoft Dynamics® SL feature overview

FEATURES	BENEFITS
<b>New User Interface</b>	The new BIO® Vue 2011 for Microsoft Dynamics® SL interface supports creating dashboards to display multiple role pertinent views at one time. The new BIO System Manager based on the latest Microsoft technology helps simplify the task of deploying and customizing the BIO solution to your business.
<b>Predefined to get you started</b>	BIO provides 55 predefined views of Microsoft Dynamics SL information. These views cover over 400 business objects providing new perspectives on Microsoft Dynamics SL data and are configurable for different roles to create the analysis needed for their function.
<b>Customer and Sales Analytics</b>	BIO helps create a complete picture of customer and sales activity. Access customer activity from shipper and inventory based sales and margin, open orders, receivables, payments, customer retention, shipping performance and project billing.
<b>Project Analytics</b>	BIO turns project transactions into project management and accountability. Access to the project data covers project profitability, billed and unbilled activity, backlog and billing schedules, time and resource analysis and project lifecycle.
<b>Financial Analytics</b>	BIO gives new meaning to financial analysis. Perform analysis by subaccount segment, company, project, vendor or customer or employee. BIO also takes advantage of Account Class and Ratio Group fields.
<b>Purchase and Vendor Analytics</b>	Get the complete picture on supplier performance; from open orders to on time performance and vendor metrics.
<b>Inventory Analytics</b>	From receipt to sale, inventory on-hand, on sales order or purchase order, consumption and production. BIO gives you a new look at inventory, the flow of activity and lifecycle.
<b>Drill through capability</b>	BIO System Manager enables you to custom define drill through to the transaction-level detail for each type of activity.
<b>Data security</b>	Your data is secure. Microsoft® SQL Server® Analysis Services can provide security down to the individual cell level if desired.
<b>Easy to tailor</b>	<p>BIO for Microsoft Dynamics SL comes with preconfigured cubes covering most business activities and include the most commonly used ways people analyze Microsoft Dynamics SL data. Modify the pre-configured BIO cubes from the superset of BIO data objects. Add or delete dimensions, attributes, measures groups and measures from cubes. Rename these objects to match the terminology of your company.</p> <p>Extend the superset of BIO business objects for existing dimensions to include information stored in Microsoft Dynamics SL user and code id fields, even extended tables. This information can be used for informational purposes or to create a new way of aggregating or rolling up information for analytical purposes.</p>
<b>Set business activities to refresh on their own schedule</b>	During the initial setup of BIO for Microsoft Dynamics SL, data is copied from the Microsoft Dynamics SL database to a repository that is optimized for analytic reporting. Normally that repository is updated on a single schedule. BIO allows you to determine independent update schedules for different business activities. Near real-time updating can be defined for mission critical data like project expenses or order shippers.
<b>Fits with your systems</b>	Built to be compatible with the technologies you already have, the data in BIO for Microsoft Dynamics SL can be viewed in BIO Vue 2011, Microsoft Dynamics SL's Home Page, Microsoft® Outlook, Microsoft® Excel, Microsoft® SharePoint®, Business Portal, Internet Explorer®, and more.

For more information about Microsoft Dynamics SL visit: [www.microsoft.com/dynamics/sl](http://www.microsoft.com/dynamics/sl)