



# PRODUCT CONFIGURATOR

## ENHANCE QUALITY AND ACCURACY AS YOU MANUFACTURE COMPLEX PRODUCTS

The JAAS Advanced Manufacturing Software (JAMS) Product Configurator is a powerful tool that enhances quality and accuracy in the manufacturing of complex products.

By allowing the user to configure a products' features, options, and dimensions, the JAMS Product Configurator provides the tools you need to maximize your quote-to-order and manufacturing performance.

With this rules-based product configurator, you can configure products in multiple ways on quotes, sales orders, and production orders.

The JAMS Product Configurator greatly reduces the number of bills of material for a finished part based on a variety of features, options, dimensions, and functions.

Configuration ID	C000000022	BOM ID	0000000000340
Revision	A1	Inventory ID	TS100 - TS100 Series Desk Seal
Status	Pending		
Description	Configured Desk Seal		

Feature ID	Label	Description	Sort Order	Min Selection	Max Selection	Min Qty	Max Qty	Lot Qty	Yieldable	Results Copy
COLORSELECTION	Door Color	Door Fabric Color	1	1	1				<input checked="" type="checkbox"/>	<input checked="" type="checkbox"/>
FABRICSELECTION	Door Fabric	Door Fabric Material	2	1	1				<input checked="" type="checkbox"/>	<input checked="" type="checkbox"/>
FABRIC	Fabric Items	Actual Fabric/Color Inventory Items	3						<input type="checkbox"/>	<input checked="" type="checkbox"/>

Label	Inventory ID	Description	Fixed Include	Qty Enabled	Qty Required	UOM	Oper. Nbr	Min Qty	Max Qty	Lot Qty	Scrap Factor	Type	Phantom Routing	Price Factor	Results Copy
*6-HYPALONB...	16HYPALONB...	Hypalon 16oz Black Fa...	<input type="checkbox"/>	<input type="checkbox"/>	=DH*[DW]*[CW]	PC						Regular	Exclude	1	<input checked="" type="checkbox"/>
> 22VINYLBLK	22VINYLBLK	Vinyl 22 oz Black Fabric	<input type="checkbox"/>	<input type="checkbox"/>	=DH*[DW]	SQFT						Regular	Exclude	1	<input checked="" type="checkbox"/>
22VINYLBU	22VINYLBU	Vinyl 22 oz Blue Fabric	<input type="checkbox"/>	<input type="checkbox"/>	=DH*[DW]	SQFT						Regular	Exclude	1	<input checked="" type="checkbox"/>
22VINYLBRN	22VINYLBRN	Vinyl 22 oz Brown Fabric	<input type="checkbox"/>	<input type="checkbox"/>	=DH*[DW]	SQFT	020					Regular	Exclude	1	<input checked="" type="checkbox"/>
22VINYLGRN	22VINYLGRN	Vinyl 22 oz Green Fabric	<input type="checkbox"/>	<input type="checkbox"/>	=DH*[DW]	SQFT						Regular	Exclude	1	<input checked="" type="checkbox"/>

Reduce the number of bills of material/routing for a finished part based on a variety of features, options, dimensions, and functions.

## KEY BENEFITS

### CREATE CONFIGURED ORDERS IN SECONDS

- Create a new configured order by simply copying or modifying an existing configured order or quote

### GAIN CONTROL OVER REVISIONS

- Make multiple revisions of the same configuration while maintaining a history of the revisions and who created them

### DETERMINE PRICES WITH EASE

- Based upon the features and options chosen, the system has multiple price roll-up capabilities to determine the actual unit price for a specific configured item



### JAMS PRODUCT CONFIGURATOR FEATURES AND CAPABILITIES

#### Configure to Order

Configure any item using predetermined features and options. The results of the configuration can carry forward to a production order.

#### Dimensional Capability

Use multiple dimensional calculations and formulas to calculate the material requirements for the specific components of configuration.

#### Order History and Look-Up

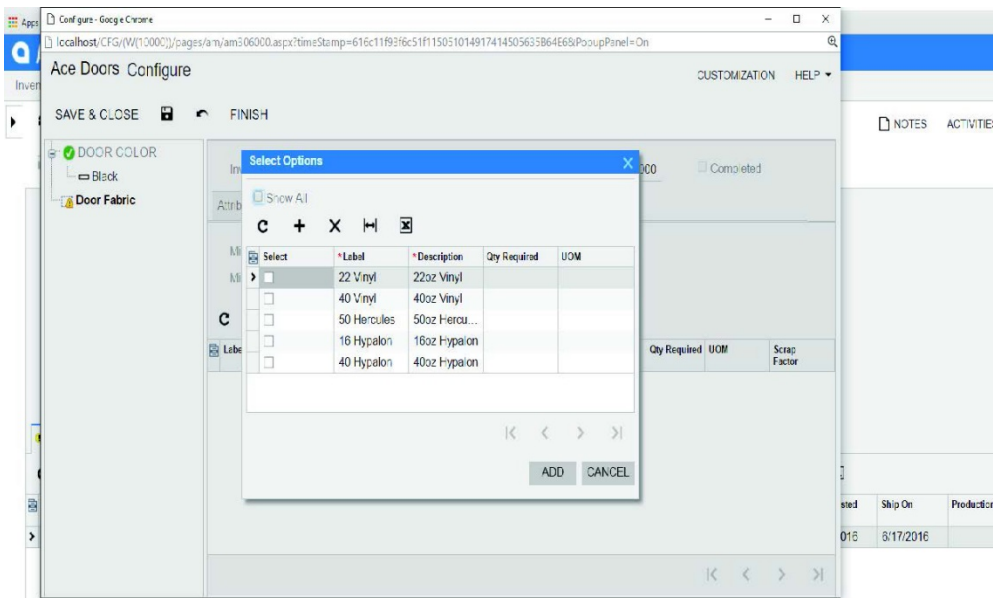
Easily look up a customer's previous configuration to create the order or make adjustments from the prior configuration.

#### Multi-Level Configuration

Support multi-level configurations of regular, non-phantom, items by creating multiple production orders for each regular configured item.

#### Formula Validation

Validate formula calculation based upon minimum and maximum attribute values or quantities for selected features and options.



### THE ACUMATICA ERP DIFFERENCE

Acumatica delivers a full suite of integrated business management applications unlike any other ERP solution on the market today.

#### STREAMLINE OPERATIONS

Manage your business more efficiently:

- Automate processes
- Control workflows
- Access the system from anywhere on any device—including mobile
- Promote collaboration with all-inclusive user licensing

#### ADAPTABLE SOLUTION

Add and extend:

- Deploy in-house or in a private or public cloud
- Easily configure your solution to fit your needs
- Add capabilities such as CRM or data visualization at any time
- Extend to other solutions and applications beyond ERP

#### YOUR BUSINESS ACCELERATED

Get a single version of the truth:

- Accelerate business performance and make smarter decisions with automated processes, real-time data collection, financial analyses, and forecasting
- No per user pricing – system scales as your business grows