



Microsoft Dynamics SL 2018 CU3



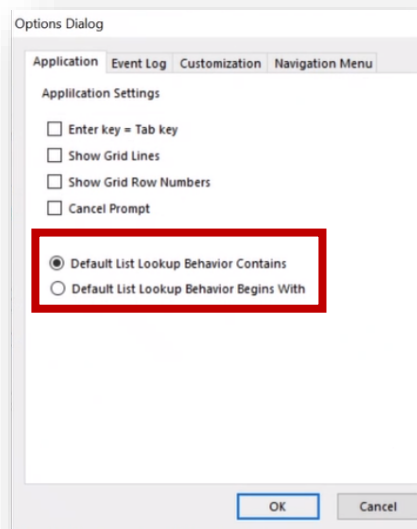
Microsoft Dynamics SL 2018 CU3

Enhancing the core application and platform

Microsoft Dynamics SL 2018 CU3 releases in Q4 of 2019. This document provides a high-level overview of the latest application and platform enhancements.

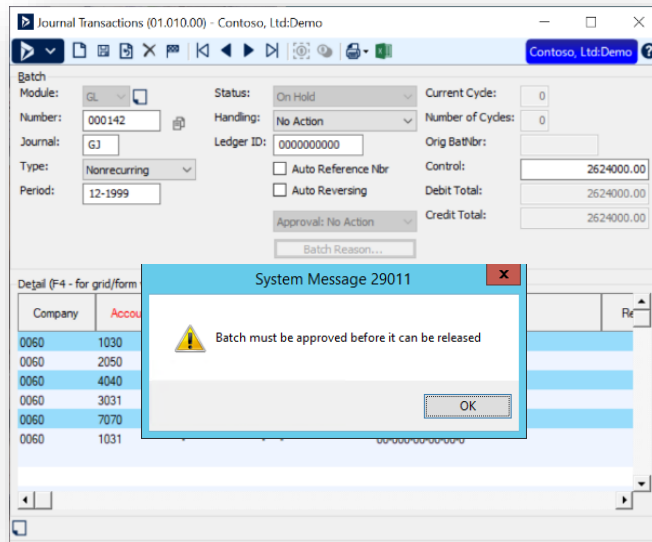
Possible Value Look Up Filtering Options Added

Users can now select filtering options for possible values, not just administrators. A new setting in the Options Dialog box allows the selection of the default List look up Behavior to be "contains" or "begins with" values.



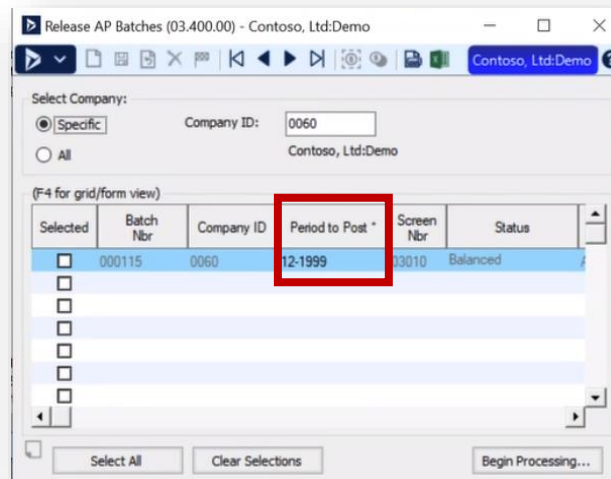
Adding the General Ledger's Journal Transactions screen to the Approval process

Companies require separation of duties, which is widely covered by existing security features. To expand on this need, a new approval processes will expand this ability by requiring data entry to be approved prior to processing. Previously added in Account Payable, it is now being added to the General Ledger. This means that journal transactions can be entered by one person and approved by another, allowing for separation of duties.



Release AP Batches screen

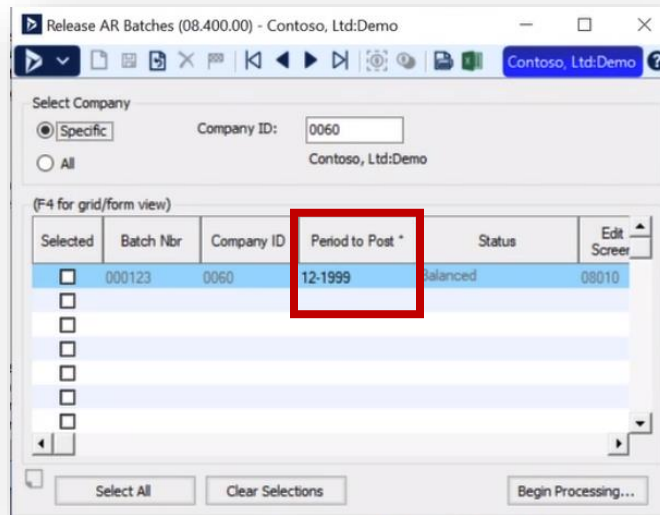
The AP Batch Release screens now displays the Period to Post value. This is the value entered during data entry in the AP Voucher and Adjustment Entry Transactions Entry screen. This allows for the quick review of the period to post information in one screen.



In addition to being able to view the Period to Post value, the screen also allows the editing of mis-entered period information, using the initialize mode feature. This allows users to fix any errors made during data entry and then release the batches with the proper period to post value.

Release AR Batches screen

The AR Batch Release screen now displays the Period to Post value. This is the value entered during data entry in the AR Invoice and memo Transactions Entry screen. This allows for the quick review of the period to post information in one screen.



In addition to being able to view the Period to Post value, the screen also allows the editing of mis-entered period information, using the initialize mode feature. This allows users to fix any errors made during data entry and then release the batches with the proper period to post value.

Project & Task – End Date Validation

The new End Date Validation feature added in SL 2018 has been expanded to allow turning it on and off in different financial modules.

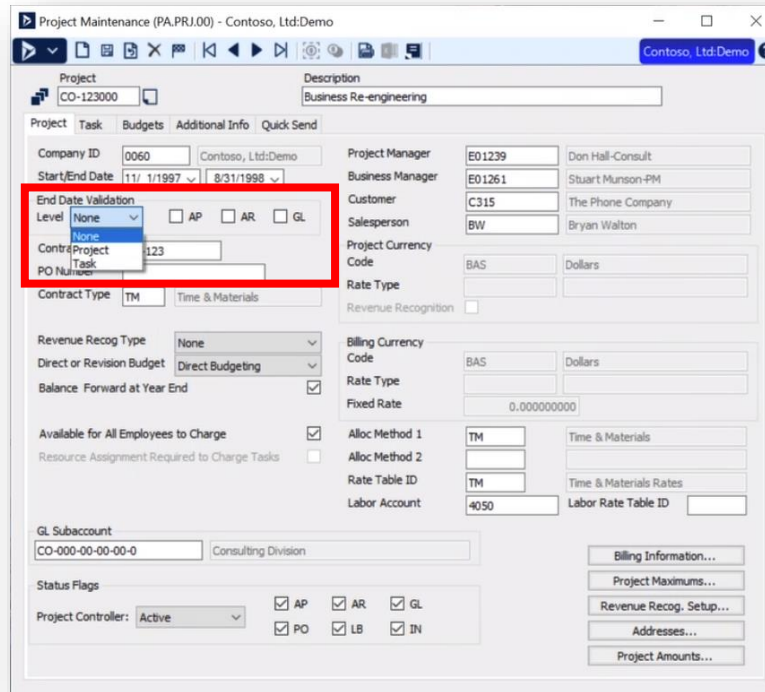
New setup feature in Project Maintenance allows companies to turn on the end date feature in the Accounts Payable, Accounts Receivable and General Ledger modules.

This enhancement works with the following screens:

- Journal Transaction screen in General Ledger

- Voucher and Adjustment Entry screen in Accounts Payable

- Invoice and Memo screen in Accounts Receivable



The end date validation process levels include:

None

- Turns off the End Date Validation feature

At Project Level:

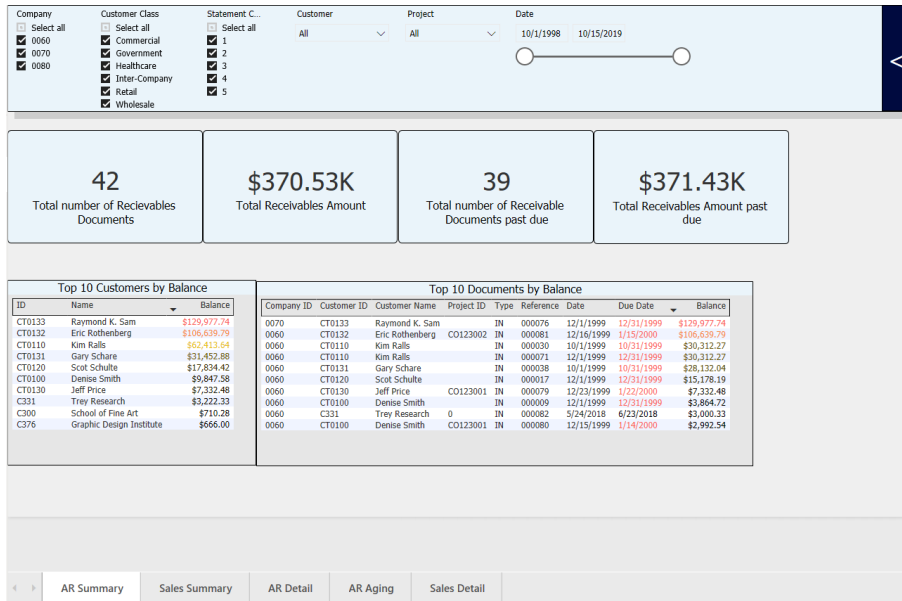
- Does not include projects with an End Date reached

At Task Level:

- Look at all Project's tasks End Dates
- If all Task End dates are past the current date, then don't show the project
- If any of them are still valid, then show the project
- Only show tasks that have End Dates that are after the current date

Power BI Customer Dashboard

The Microsoft Dynamics SL 2018 CU3 release introduces an additional dashboard to help users see the benefits of using Microsoft technologies to interact or report on their SL data.



Visual Studio 2017 & 2019 Support

Microsoft Dynamics SL 2018 CU3 introduces support for Microsoft's Visual Studio version 2017 and Visual Studio version 2019.

Report Assistance

Microsoft Dynamics SL 2018 CU3 re-introduces the Microsoft Dynamics SL's Report Assistance. A document that shows you the SL reports and all the fields involved in the report to help you understand what each report can provide.

Contact a Microsoft partner to find out how Microsoft Dynamics SL can help your business. Or to find out more about Microsoft Dynamics SL, visit www.microsoft.com/dynamics/sl. United States and Canada toll-free: (1) (888) 477-7989 Worldwide: (1) (701) 281-6500.

© 2019 Microsoft Corporation. All rights reserved. MICROSOFT MAKES NO WARRANTIES, EXPRESS, IMPLIED, OR STATUTORY, AS TO THE INFORMATION IN THIS DOCUMENT. Microsoft, the Microsoft logo, Microsoft Dynamics, and the Microsoft Dynamics logo are trademarks of the Microsoft group of companies.

